



Product Specifications

Description	6.25" Straight Shears	6.5" Thinning Shears	6.5" Curved Ball Tip Shears	8" Curved Shears	8" Straight Shears
Item #	Right Handed: <b>#80680</b> Left Handed: <b>#80715</b>	Right Handed: <b>#80645</b> Left Handed: <b>#80635</b>	Right Handed: <b>#80685</b> Left Handed: <b>#80720</b>	Right Handed: <b>#80670</b> Left Handed: <b>#80625</b>	Right Handed: <b>#80675</b> Left Handed: <b>#80630</b>
UPC	Right Handed: <b>0 40102 80680 3</b> Left Handed: <b>0 40102 80715 2</b>	Right Handed: <b>0 40102 80645 2</b> Left Handed: <b>0 40102 80635 3</b>	Right Handed: <b>0 40102 80685 8</b> Left Handed: <b>0 40102 80720 6</b>	Right Handed: <b>0 40102 80670 4</b> Left Handed: <b>0 40102 80625 4</b>	Right Handed: <b>0 40102 80675 9</b> Left Handed: <b>0 40102 80630 8</b>
Rockwell Hardness	<b>57-58</b>	<b>59-60</b>	<b>55-56</b>	<b>59-60</b>	<b>59-60</b>
Package Dimensions	<b>11.5" H x 4.125" W x 0.625" D</b>	<b>11.5" H x 4.125" W x 0.625" D</b>	<b>11.5" H x 4.125" W x 0.625" D</b>	<b>11.5" H x 4.125" W x 0.625" D</b>	<b>11.5" H x 4.125" W x 0.625" D</b>
Package Weight	<b>0.2 lbs.</b>	<b>0.2 lbs.</b>	<b>0.2 lbs.</b>	<b>0.3 lbs.</b>	<b>0.3 lbs.</b>
Inner Pack Dimensions	<b>5.4" H x 11.9" W x 4.8" D</b>	<b>5.4" H x 11.9" W x 4.8" D</b>	<b>5.4" H x 11.9" W x 4.8" D</b>	<b>5.4" H x 11.9" W x 4.8" D</b>	<b>5.4" H x 11.9" W x 4.8" D</b>
Inner Pack Quantity	<b>6</b>	<b>6</b>	<b>6</b>	<b>6</b>	<b>6</b>
Inner Pack Weight	<b>1.8 lbs.</b>	<b>1.8 lbs.</b>	<b>1.9 lbs.</b>	<b>2.2 lbs.</b>	<b>2.2 lbs.</b>
Standard Pack Dimensions	<b>12.5" H x 16.9" W x 15.625" D</b>	<b>12.5" H x 16.9" W x 15.625" D</b>	<b>12.5" H x 16.9" W x 15.625" D</b>	<b>12.5" H x 16.9" W x 15.625" D</b>	<b>12.5" H x 16.9" W x 15.625" D</b>
Standard Pack Quantity	<b>24</b>	<b>24</b>	<b>24</b>	<b>24</b>	<b>24</b>
Standard Pack Weight	<b>7.5 lbs.</b>	<b>7.5 lbs.</b>	<b>7.8 lbs.</b>	<b>10.1 lbs.</b>	<b>10.1 lbs.</b>
Warranty	<b>One-Year</b>	<b>One-Year</b>	<b>One-Year</b>	<b>One-Year</b>	<b>One-Year</b>
Made in	<b>Taiwan</b>	<b>Taiwan</b>	<b>Taiwan</b>	<b>Taiwan</b>	<b>Taiwan</b>

# Andis® Professional Animal Grooming Shears





# Andis® Professional Animal Grooming Shears

**andis**  
every style. every groom. every cut.

- Professional grade withstands heavy use.
- Ergonomic, offset handles designed for all-day use and superior control.
  - Cryogenically tempered Japanese stainless steel precision crafted for heavy use.
    - Convex edges for precision cut.
    - High Rockwell hardness (HRC) value.
- Durable, high-gloss mirror finish resists corrosion.
- Includes oil for maintaining cutting performance.
  - Soft-grip finger inserts for maximum comfort.
  - Convenient storage package.



6.25" Straight Shears



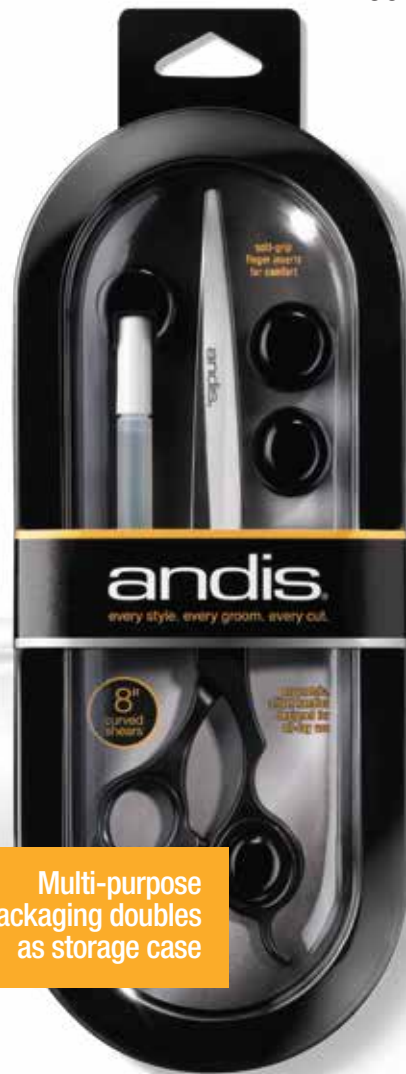
6.5" Thinning Shears

6.5" Curved Ball Tip Shears



8" Curved Shears

8" Straight Shears



Multi-purpose packaging doubles as storage case

## 6.25" Straight Shears

#80680 (Right), #80715 (Left)

- Perfect for detail work on small or toy size dogs.
- Use to trim around the feet and over the eyes.
- Small size is easy to navigate when trimming in hard-to-reach spots.
- Ideal para trabajo de detalle en perros pequeños o toy.
- Utilízela para recortar alrededor de las patas y sobre los ojos.
- El tamaño pequeño permite desplazarse fácilmente al recortar lugares de difícil acceso.
- Parfaite pour un travail précis sur des chiens de taille petite ou miniature.
- Finition autour des pattes et des yeux.
- Petit format facile à utiliser pour atteindre les zones difficiles d'accès.

## 6.5" Thinning Shears

#80645 (Right), #80635 (Left)

- 28-tooth – 6.5" length.
- Great for fine tuning and moderate blending.
- Use to thin and remove bulk.
- Especially effective around the face and eye areas.
- 28 dientes – 6.5" de largo.
- Excelente para ajustes y mezclas moderadas.
- Úselo para adelgazar y remover abultamientos.
- Especialmente eficaz alrededor de la cara y los ojos.
- 28 dents – 6.5" longueur.
- Superbe pour une finition précise et un fondu modéré.
- S'utilise pour amincir et enlever le gros.
- Particulièrement efficace sur le museau et autour des yeux.

## 6.5" Curved Ball Tip Shears

#80685 (Right), #80720 (Left)

- Ideal for trimming ears – no sharp points for a better grooming experience.
- Provides an extra measure of safety for pet grooming.
- Great for beginners.
- Ideal para recortes en las orejas, sin puntos afilados para una mejor experiencia de aseo.
- Proporciona una medida adicional de seguridad para el acicalamiento de la mascota.
- Excelente para principiantes.
- Parfait pour la coupe d'entretien des oreilles – aucun point tranchant pour une meilleure expérience de coupe d'entretien.
- Plus grande marge de sécurité pour le toilettage des animaux.
- Superbe pour les débutants.

## 8" Curved Shears

#80670 (Right), #80625 (Left)

- Designed for curved surfaces such as the head.
- Saves time grooming beveled parts of the pet.
- Curved blade is perfect for top knot and bracelets.
- Diseñado para superficies curvas como la cabeza.
- Ahorra tiempo al limpiar partes biseladas de la mascota.
- La navaja curva es perfecta para el nudo superior y las pulseras.
- Conçu pour les surfaces courbées comme la tête.
- Économise du temps dans la coupe des parties en biseau de l'animal de compagnie.
- La lame recourbée est parfaite pour les chignons et les bracelets.

## 8" Straight Shears

#80675 (Right), #80630 (Left)

- Best for areas where a long straight cut is needed.
- An all-around general cutting tool for finishing.
- Can be used on all sizes of dogs.
- Ideal para áreas donde se necesitan cortes largos y rectos.
- Una herramienta multiuso general de corte para realizar el acabado.
- Puede utilizarse en perros de todos los tamaños.
- Préférable pour les zones où une coupe longue et droite est nécessaire.
- Outil de finition pour tous les types de coupes.
- Utilisable sur tous les gabarits de chien.